

INDUSTRIAL APPLICATIONS

**We raise, re-level  
and re-support  
moving and sunken  
concrete floors,  
driveways and  
whole buildings!**



# URETEK®

We drill 6 or 16 mm holes every 1.2 metres and inject a multi-component structural resin. It expands immediately and fills voids, compacts the substrate and lifts, as required, under laser guidance. We can 'Deep-Inject', compacting and increasing ground bearing capacity up to 6 metres down! Trafficable again in 30 minutes!

- ✓ **Fast!** Most jobs done in a day or two.
- ✓ **Forklifts and trucks ride smoothly again.**
- ✓ **Trip hazards and slab movement eliminated.**
- ✓ **Voids are filled.** ✓ **Slab deterioration arrested.**
- ✓ **Floors and shelving systems are re-levelled.**
- ✓ **Wall cracks usually close.** ✓ **No mess.**
- ✓ **No excavation.** ✓ **Structural resin injected.**

**Fast. Minimal disruption. Economical.**



WASHOUTS FILLED  
& 'PUMPING' JOINTS  
STABILISED



MACHINERY RE-SUPPORTED



BEFORE

AFTER



DRIVEWAYS RE-LEVELLED



OFFICES RAISED



[www.uretek.co.nz](http://www.uretek.co.nz)

NORTH ISLAND

**09 421 0348**

[auck@uretek.co.nz](mailto:auck@uretek.co.nz)

SOUTH ISLAND

**03 987 3835**

[chch@uretek.co.nz](mailto:chch@uretek.co.nz)

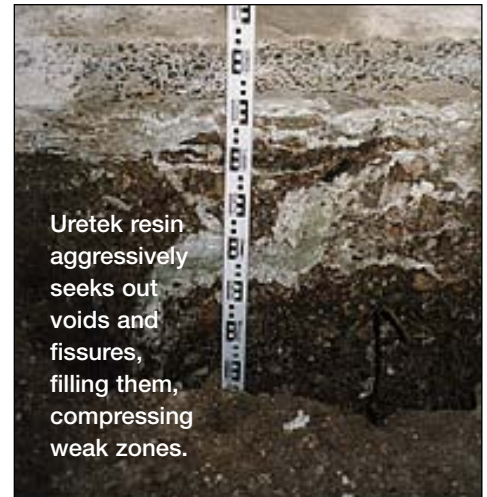
**URETEK GROUND ENGINEERING**

We lift and re-support many kinds of on-ground structures - from driveways, and hardstands to factory and warehouse floors and whole buildings.

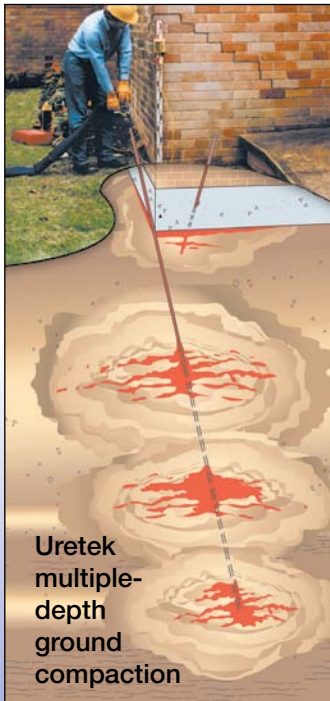
- ✓ Uretek work is fast! - Most jobs are done in a day or two.
- ✓ Trip hazards are eliminated and forklifts run smoothly.
- ✓ Your operations can continue while we're working - we can treat one area at a time and work at night, if required. There's usually no need to move stock or machinery.
- ✓ Traffic can resume in just 30 minutes.

- ✓ We fill underground voids, large and small, effectively and economically.
- ✓ Cracks in internal and external walls usually close up as footings are raised. Doors and windows can work properly again.
- ✓ We rectify ponding, slab movement and trip hazards in outdoor areas.
- ✓ No excavation. Structural resin injection. No mess, dust or water.
- ✓ The URETEK Method is proven in Australia and in developed countries overseas.

Call us to discuss your work.



Uretek resin aggressively seeks out voids and fissures, filling them, compressing weak zones.



Uretek multiple-depth ground compaction

### URETEK DEEP-INJECTION TO RE-SUPPORT FOUNDATIONS AND IMPROVE GROUND BEARING CAPACITY...BY UP TO 500%

To provide long term solutions, where Dynamic Cone Penetrometer (DCP) tests reveal weak strata and suitable conditions, Uretek Deep-Injection may be used to strengthen weak layers and improve the ground bearing capacity. Uretek resin is injected to expand and compact at multiple depths. In this way the bearing capacity of weak ground may be improved by up to 500%.

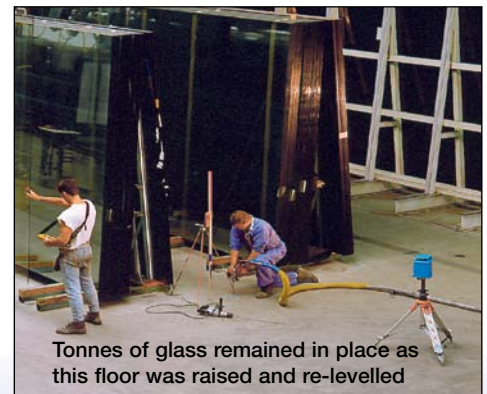
Uretek Deep-Injection is often used in conjunction with Uretek Slab-Lifting, or may be carried out where no lift is required.



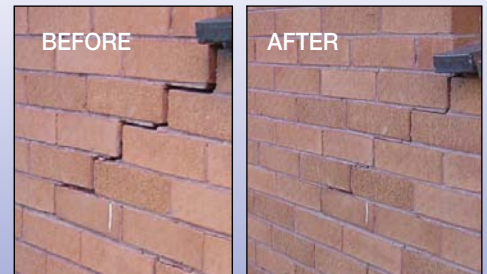
Uretek DCP testing



Completely self-contained rig



Tonnes of glass remained in place as this floor was raised and re-levelled



Note the cracked corner wall in the building at left.

The cracks were completely closed as the structure was raised and re-supported by application of both Uretek Slab-Lift and Deep-Injection.

**The URETEK Method is proven:** Developed and refined in Europe over 27 years, in the USA since 1988 and Australia since 1995, the URETEK Method is now available in over 50 countries.

Uretek is extremely strong, but is over 20 times lighter than traditional cement grouts, so it places very little extra weight on ground that is often already over-stressed.

Uretek resin is also impervious to water.



This warehouse floor had sunk as much as 75 mm in a number of places including around the doorway area.

The floor was raised, the sub-floor zone compacted and the structure was re-supported in the process.



www.uretek.co.nz

NORTH ISLAND

09 421 0348

auck@uretek.co.nz

SOUTH ISLAND

03 987 3835

chch@uretek.co.nz

**URETEK GROUND ENGINEERING**